



Patient Lifter 400 lb Battery Powered with Charger and Harness (Red)

Key features

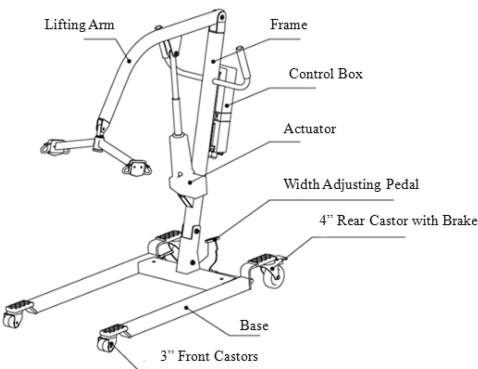
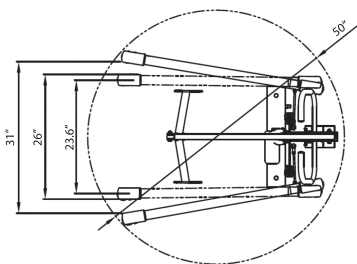
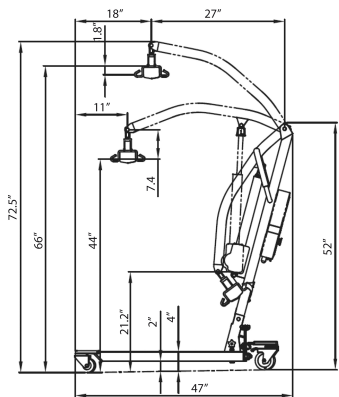
- **FREE HARNESS:** Four-point spreader bar for the safest, most comfortable experience. Easily transfer from bed to wheelchair, even from the floor. Full harness size can accommodate all size patients. Made of Polyester that can be used in wet or dry environments
- **INSTALL:** Maximum space for the user, this lift is designed to ensure that folding and unfolding can be carried out easily and without the need for additional tools. Can be easily foldable for transport
- **CAPACITY:** Max load capacity of 400lbs. The height range allows lifting from floor or high surfaces. Padded swivel bar with 360-degree rotation for added convenience. High-quality lifter that features a battery-powered operation. The crane was designed to ensure safe user handling
- **ELECTRONIC SYSTEM:** Convenient push-button hand controls for easy maneuverability, rear pedal adjustable legs can be operated by foot. Unit has built-in manual emergency lowering device and an anti-entrapment feature if boom meets any resistance while lowering
- 3 Year Warranty, Customer Support and Service in the USA

The PW-PL400 is a compact mobile floor lift that is multi-purpose and convenient to use, with a lightweight design that allows it to navigate small spaces and access difficult to reach areas with ease. For added convenience, the PW-PL400 is foldable to allow easy transport and storage, staying out of the way and going where you need it with ease. The adjustable base easily accommodates patients and wheelchairs with easy-to-use controls.



Technical Specifications

Personnel Lifting Capacity	400 lbs	Air Hoist Lowering Speed at Rated Load	3in/min
Air Hoist Lifting Speed at Rated Load	3in/min	Emergency Stop	Yes
Voltage	Battery Power 24 VDC	Warranty	3 Year



Unit Weight & Dimensions

Total Unit Weight	108 lbs / 50 Kg
-------------------	-----------------

Package 1 Net Weight	108 lbs / 49 Kg
Package 1 Width	53 in / 134.62 cm
Package 1 Gross Weight	103 lbs / 47 Kg
Package 1 Height	14 in / 35.56 cm
Package 1 Length	28 in / 71.12 cm

Packaging Weight & Dimensions