



23 Ton Electric Winch 52200 lbs. 440~480V Wire rope Not Included

Key features

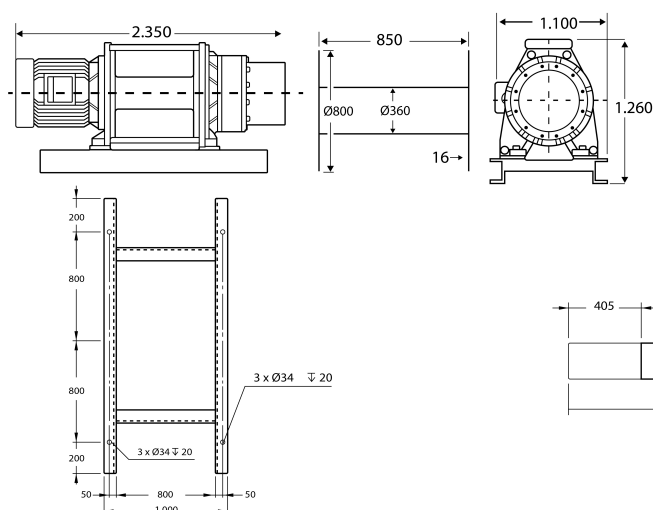
- Double Brake for Added Safety. Reducer brake and Motor Brake are Standard.
- Low Voltage IP66 Remote Control with Emergency Stop.
- Complete Line of Optional Accessories such as Drivers, Wireless and Desk Controls, and More.
- US ASME B30.7 and EC EN14492-2 , EN60204-32 Standard
- 3 Year Warranty, Customer Support and Service in the USA

Compact Winch Description

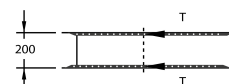
The **Prowinch 52200 lbs compact winch** allows you to easily pull heavy loads. The strong motor and three-phase connection are perfect for use in a wide variety of situations and environments. There are a variety of optional add-ons available for a more customized experience.

Technical Specifications

1st Layer Rated Capacity	52200 lb /23700 kg	Control	E-Stop/Up/Down - Optional Variable Speed
Speed /min	21.3 ft~37.8 ft / 6.5~11.5 m	Reducer Brake	1 @125%
Number of Speeds	1 Speed - Optional Variable Speed	Drum Brake	Optional
Voltage	3 Phase 380/440~480V 50/60Hz	Wire Rope	Not Included
Duty Class	H4/M6/3m/Class D	Recommended Wire Rope	ø 1 1/4 in x 820 ft ø31.7 mm x 250 m
Motor/Engine Power	30 kW / 40 HP	Humidity	<85%
Motor Brake	1 @125%	Temperature	-4 ~ 104° F / -20 ~ 40° C
Insulation Grade	F	Noise Level	85 db
IEC Motor Protection	IP54	Standards Compliance	ASME/ANSI B30.7, B30.10 / AWS D14.3 / RR-W-410E / ISO 2232
Dynamic Brake	Optional	Warranty	3 Year



	Layer / Capa	Rope on drum / Mts x Capa	Lifting x layer / Cap x Capa	Speed / Velocidad (per min)
INCLUDED/INCLUIDO	1	99 ft / 30 m	52250 lb / 23700 kg	21.3 ft / 6.5 m
	2	214 ft / 65 m	45225 lb / 20514 kg	24.6 ft / 7.5 m
	3	345 ft / 105 m	39865 lb / 18082 kg	27.9 ft / 8.5 m
	4	491 ft / 150 m	35641 lb / 16167 kg	31.2 ft / 9.5 m
	5	652 ft / 199 m	32227 lb / 14618 kg	34.5 ft / 10.5 m
	6	829 ft / 253 m	29409 lb / 13340 kg	37.8 ft / 11.5 m



Dimensions in mm / Dimensiones en mm

Unit Weight & Dimensions

A Total Height	1260 mm	Package 1 Net Weight	7717 lbs / 3501 Kg
BD Barrel Diameter	ø360 mm	Package 1 Width	86 in / 218.44 cm
D Depth	1100 mm	Package 1 Gross Weight	7717 lbs / 3501 Kg
FD Flange Diameter	ø800 mm	Package 1 Height	62 in / 157.48 cm
W Width	2350 mm	Package 1 Length	39 in / 99.06 cm
DL Drum Length	850 mm		
Total Unit Weight	7717 lbs / 3502 Kg		

Packaging Weight & Dimensions

Package 1 Net Weight	7717 lbs / 3501 Kg
Package 1 Width	86 in / 218.44 cm
Package 1 Gross Weight	7717 lbs / 3501 Kg
Package 1 Height	62 in / 157.48 cm
Package 1 Length	39 in / 99.06 cm