



## 1 Ton Crane Scale Light Alloy IP67

### Key features

- 3 Year Warranty, Customer Support and Service in the USA

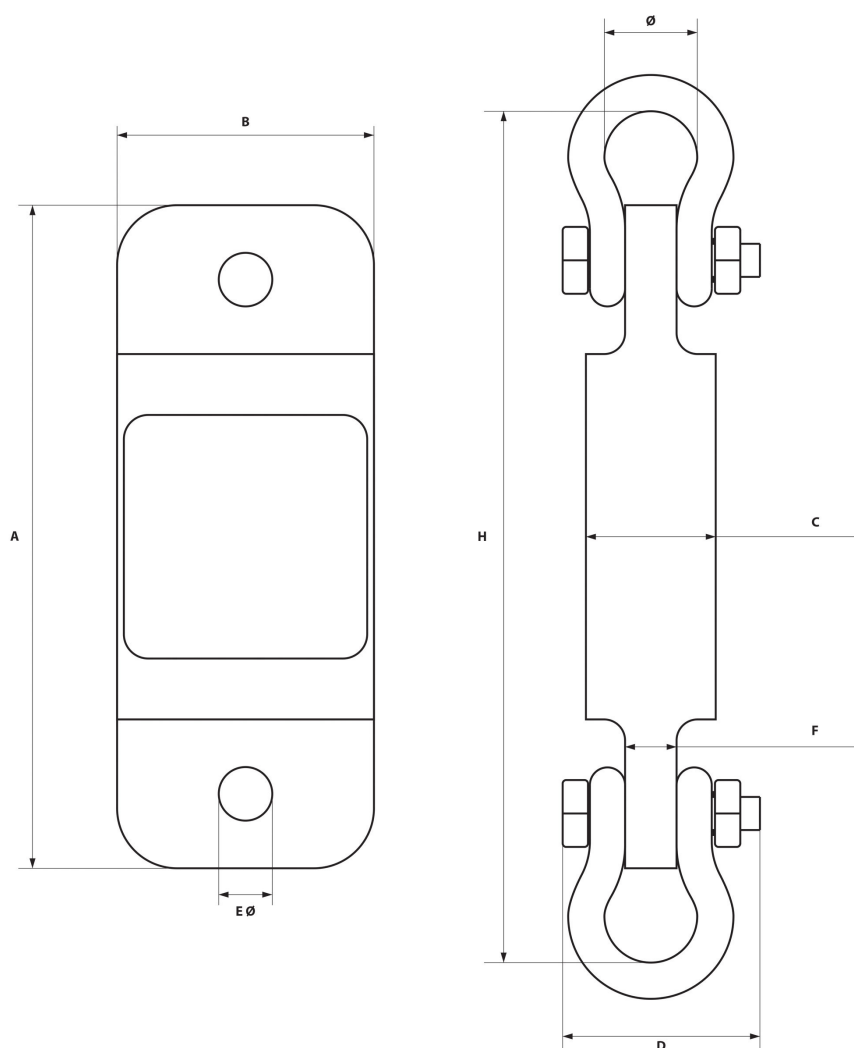
### Crane Scale Description

Heavy duty units are weighed with our Crane Dynamometers which are essential to help weigh heavy objects with cranes. Our crane weights feature wireless controls to alter units from afar. Our features make load monitoring heavyweight units easier



# Technical Specifications

Rated Load Capacity	2200 lb / 1 ton	Minimum Weight	22 lb / 10 kg
Accuracy Grade	Grade III / n=3000	Receiver Power Supply	3 Battery (pilas) AA 1.5V
Scale Interval	1/2/5/10/20/50 lb/kg	Operating Temperature Range	4° - 122 °F / -20° - 50° C
Sample Rate (per sec)	80 times/veces	Warranty	3 Year



Model / Modelo	PWHYCS1T	PWHYCS5T	PWHTCS10T	PWHYCS20T	PWHYCS30T	PWHYCS50T
A	9 5/8 in	11 1/4 in	12 1/3 in	16.5 in	16.5 in	18.3 in
	244.5 mm	286 mm	318 mm	420 mm	420 mm	465 mm
B	3 3/4 in	4 in	4 1/2 in	4.8 in	5.4 in	5.9 in
	95.3 mm	102 mm	114 mm	128 mm	138 mm	150 mm
C	1 7/8 in	2 in	1 7/8 in	2.8 in	3.1 in	3.9 in
	47.6 mm	51 mm	48 mm	70 mm	80 mm	100 mm
D	2 13/16 in	4 7/8 in	6 1/2 in	10.2 in	11 in	12 in
	71.4 mm	124 mm	165 mm	260 mm	280 mm	305 mm
Ø	1 3/8 in	2 1/4 in	3 1/4 in	5 in	5.7 in	7.2 in
	34.9 mm	57 mm	83 mm	127 mm	146 mm	184 mm
H	12 in	16 in	19 1/2 in	25.9 in	29.1 in	36.6 in
	304.8 mm	406 mm	495 mm	660 mm	740 mm	930 mm
E Ø	13/16 in	1 7/16 in	1 7/6 in			
	19.6 mm	37 mm	37 mm			
F	3/4 in	1 3/8 in	1 7/8 in			
	19.04 mm	35 mm	48 mm			



## Unit Weight & Dimensions

<b>Total Unit Weight</b>	6 lbs / 3 Kg
--------------------------	--------------

## Packaging Weight & Dimensions

<b>Package 1 Net Weight</b>	6 lbs / 3 Kg
-----------------------------	--------------

<b>Package 1 Width</b>	13 in / 33.02 cm
------------------------	------------------

<b>Package 1 Gross Weight</b>	8 lbs / 4 Kg
-------------------------------	--------------

<b>Package 1 Height</b>	13 in / 33.02 cm
-------------------------	------------------

<b>Package 1 Length</b>	13 in / 33.02 cm
-------------------------	------------------