



## 12 Ton Electric Winch 440~480V

### Key features

- Double Brake for Added Safety. Reducer brake and Motor Brake are Standard.
- Low Voltage IP66 Remote Control with Emergency Stop.
- Complete Line of Optional Accessories such as Drivers, Wireless and Desk Controls, and More.
- US ASME B30.7 and EC EN14492-2 , EN60204-32 Standard
- 3 Year Warranty, Customer Support and Service in the USA

### Compact Winch Description

The **Prowinch 27500 lbs compact winch** allows you to easily pull heavy loads. The strong motor and three-phase connection are perfect for use in a wide variety of situations and environments. There are a variety of optional add-ons available for a more customized experience.

### Prowinch Compact Winch

All of our compact winches are created with the goal of offering the best price-performance ratio. Key components such as lifespan factors are constantly tested and improved in order to offer the best product for the price.

### Key Components

All internal components have been upgraded to meet the highest quality standards. Key electronic components are produced by American or German brands, and we use American-made lubricants to ensure the lifespan of gears and reducers. Final assembly and all tests are performed locally at Prowinch facility before shipping to ensure that every unit meets the corresponding standard.

### Duty Classification

Duty Classification is a key factor when choosing the right unit. This H4 heavy duty industrial winch is suitable for high-volume handling in mining, construction, forestry, manufacturing plants and mills, and foundries. For uniformly distributed work periods, the winches have 50% max. operational time per hour and can handle up to 300 starts per hour. When being used for infrequent work periods, the winch can be operated for 30 minutes from a cold start with up to 300 starts per hour. Operational time ratings are calculated at a 65% load factor, as per ASME Standard.

### Control System

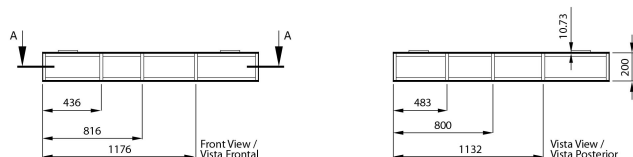
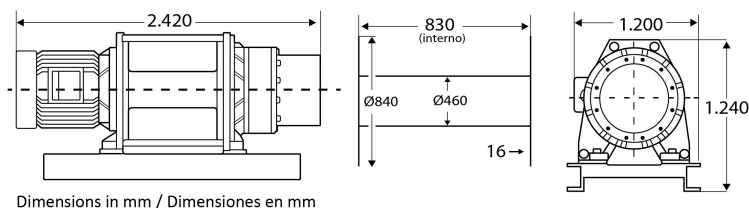
For this winch we offer different control options: single speed IP66 control with up , down, and emergency stop, a variable speed control with a dynamic brake and an SEW Eurodrive German Driver or Lenze USA Driver, wireless remote controls, or a PWZR series full desktop control with Touch Screen controls and indicators, overload protection, and alarms to give the operator all the necessary information for a safe operation of the winch and much more. The winch contains the best electric components available on the market and is made, assembled and tested by Prowinch locally in the US, Chile, or Colombia.

### Braking System

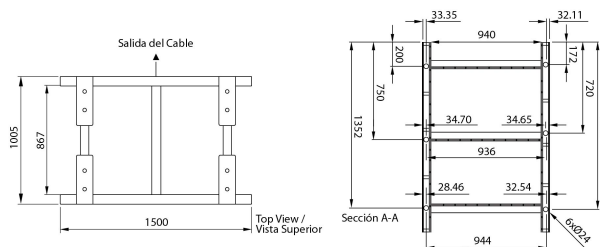
Prowinch compact winches includes two brakes, one reducer brake and one motor brake. For additional safety we also offer an optional drum brake and dynamic brake. All brake systems are tested at 125% of the rated winch capacity and are designed to automatically engage immediately upon any loss of power.

## Technical Specifications

<b>1st Layer Rated Capacity</b>	27500 lb / 12600 kg	<b>Control</b>	Not included: E-Stop/Up/Down or Variable Speed
<b>Speed /min</b>	30~43 ft / 9~13 m	<b>Reducer Brake</b>	1 @125%
<b>Number of Speeds</b>	1 Speed - Optional Variable Speed	<b>Drum Brake</b>	Optional
<b>Voltage</b>	3 Phase 380/440~480V 50/60Hz	<b>Wire Rope</b>	Not Included
<b>Duty Class</b>	H4/M6/3m/Class D	<b>Recommended Wire Rope</b>	ø1 1/4 in x 820 ft   ø31.7 mm x 250 m UP TO ø 7/8 x 2300 ft
<b>Motor/Engine Power</b>	22 kW	<b>Humidity</b>	<85%
<b>Motor Brake</b>	1 @125%	<b>Temperature</b>	-4 ~ 104° F / -20 ~ 40° C
<b>Insulation Grade</b>	F	<b>Noise Level</b>	85 db
<b>IEC Motor Protection</b>	IP54	<b>Standards Compliance</b>	ASME/ANSI B30.7, B30.10 / AWS D14.3 / RR-W-410E / ISO 2232
<b>Dynamic Brake</b>	Optional	<b>Warranty</b>	3 Year



Layer / Capa	Rope on drum / Mts x Capa	Lifting x layer / Cap x Capa	Speed / Velocidad (per min)
1	130 ft / 39 m	27899 lb / 12655 kg	29.8 ft / 9.1 m
2	274 ft / 84 m	24988 lb / 11335 kg	33.2 ft / 10.1 m
3	434 ft / 132 m	22627 lb / 10264 kg	36.7 ft / 11.2 m
4	609 ft / 186 m	20674 lb / 9378 kg	40.2 ft / 12.2 m
5	799 ft / 243 m	19031 lb / 8632 kg	43.6 ft / 13.3 m



## Unit Weight & Dimensions

<b>A Total Height</b>	1240 mm	<b>Package 1 Net Weight</b>	6804 lbs / 3087 Kg
<b>BD Barrel Diameter</b>	ø460 mm	<b>Package 1 Width</b>	86 in / 218.44 cm
<b>D Depth</b>	1200 mm	<b>Package 1 Gross Weight</b>	6945 lbs / 3151 Kg
<b>FD Flange Diameter</b>	ø840 mm	<b>Package 1 Height</b>	62 in / 157.48 cm
<b>W Width</b>	2420 mm	<b>Package 1 Length</b>	39 in / 99.06 cm
<b>DL Drum Length</b>	830 mm		
<b>Total Unit Weight</b>	6804 lbs / 3088 Kg		

## Packaging Weight & Dimensions