



21 Ton Heavy Duty Electric Winch Capacity 440V 3 Phase

Key features

- Double Brake for Added Safety. Reducer brake and Motor Brake are Standard.
- Low Voltage IP66 Remote Control with Emergency Stop.
- Complete Line of Optional Accessories such as Drivers, Wireless and Desk Controls, and More.
- US ASME B30.7 and EC EN14492-2 , EN60204-32 Standard
- 3 Year Warranty, Customer Support and Service in the USA

Compact Winch Description

The **Prowinch 46297 lbs compact winch** is a powerful heavy-duty winch. The strong motor and three-phase connection are perfect for use in mining, logging, or manufacturing. There are a variety of optional add-ons available for a more customized experience.

Prowinch Compact Winch

All of our compact winches are created with the goal of offering the best price-performance ratio. Key components such as lifespan factors are constantly tested and improved in order to offer the best product for the price.

Key Components

All internal components have been upgraded to meet the highest quality standards. Key electronic components are produced by American or German brands, and we use American-made lubricants to ensure the lifespan of gears and reducers. Final assembly and all tests are performed locally at Prowinch facility before shipping to ensure that every unit meets the corresponding standard.

Duty Classification

Duty Classification is a key factor when choosing the right unit. This H4 heavy duty industrial winch is suitable for high-volume handling in mining, construction, forestry, manufacturing plants and mills, and foundries. For uniformly distributed work periods, the winches have 50% max. operational time per hour and can handle up to 300 starts per hour. When being used for infrequent work periods, the winch can be operated for 30 minutes from a cold start with up to 300 starts per hour. Operational time ratings are calculated at a 65% load factor, as per ASME Standard.

Control System

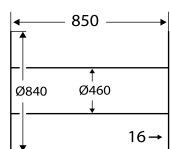
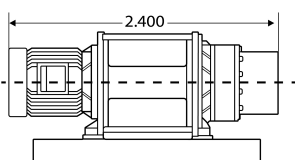
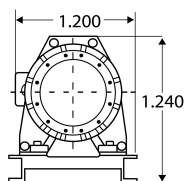
For this winch we offer different control options: single speed IP66 control with up , down, and emergency stop, a variable speed control with a dynamic brake and an SEW Eurodrive German Driver or Lenze USA Driver, wireless remote controls, or a PWZR series full desktop control with Touch Screen controls and indicators, overload protection, and alarms to give the operator all the necessary information for a safe operation of the winch and much more. The winch contains the best electric components available on the market and is made, assembled and tested by Prowinch locally in the US, Chile, or Colombia.

Braking System

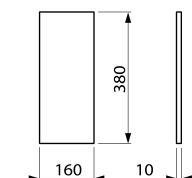
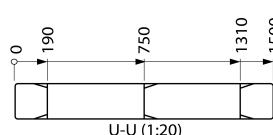
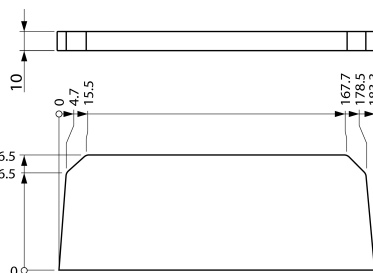
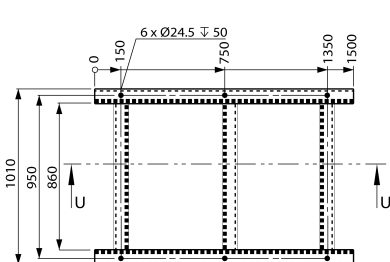
Prowinch compact winches includes two brakes, one reducer brake and one motor brake. For additional safety we also offer an optional drum brake and dynamic brake. All brake systems are tested at 125% of the rated winch capacity and are designed to automatically engage immediately upon any loss of power.

Technical Specifications

1st Layer Rated Capacity	46297 lb / 21000 kg	Control	Not included: E-Stop/Up/Down or Variable Speed
Speed /min	24.7~36.1 ft / 7.5~11 m	Reducer Brake	1 @125%
Number of Speeds	1 Speed - Optional Variable Speed	Drum Brake	Optional
Voltage	3 Phase 380/440~480V 50/60Hz	Wire Rope	Not Included
Duty Class	H4/M6/3m/Class D	Recommended Wire Rope	ø1 1/4 in x 820 ft ø31.7 mm x 250 m UP TO ø 7/8 x 2300 ft
Motor/Engine Power	30 kW	Humidity	<85%
Motor Brake	1 @125%	Temperature	-4 ~ 104° F / -20 ~ 40° C
Insulation Grade	F	Noise Level	85 db
IEC Motor Protection	IP54	Standards Compliance	ASME/ANSI B30.7, B30.10 / AWS D14.3 / RR-W-410E / ISO 2232
Dynamic Brake	Optional	Warranty	3 Year



Layer / Capa	Rope on drum / Mts x Capa	Lifting x layer / Cap x Capa	Speed / Velocidad (per min)
1	130 ft / 39 m	46.290 lb / 21.000 kg	24.7 ft / 7.5 m
2	274 ft / 84 m	41.466 lb / 18.809 kg	27.7 ft / 8.4 m
3	434 ft / 132 m	37.548 lb / 17.032 kg	30.4 ft / 9.3 m
4	609 ft / 186 m	34.307 lb / 15.561 kg	33.3 ft / 10.1 m
5	799 ft / 243 m	31.581 lb / 14.325 kg	36.1 ft / 11.0 m



Dimensions in mm /
Dimensiones en mm

Unit Weight & Dimensions

A Total Height	1240 mm	Package 1 Net Weight	6789 lbs / 3080 Kg
BD Barrel Diameter	ø460 mm	Package 1 Width	98 in / 248.92 cm
D Depth	1200 mm	Package 1 Gross Weight	6945 lbs / 3151 Kg
FD Flange Diameter	ø840 mm	Package 1 Height	59 in / 149.86 cm
W Width	2400 mm	Package 1 Length	59 in / 149.86 cm
DL Drum Length	850 mm		
Total Unit Weight	6789 lbs / 3081 Kg		

Packaging Weight & Dimensions