



1500 lbs Powered Electric Winch Waterproof 12V DC

Key features

- Sturdy 1,500lb rated line pull powered by a 1.2 horsepower 12V DC motor.
- Low-amp, permanent magnet motor; Gear Ratio- 153:1
- Features a 1 stage planetary gear train system, Hassle-Free roller fairlead.
- Equipped with an automatic brake to prevent the galvanized steel rope from sliding.
- 1 Year Warranty, Customer Support and Service in the USA

Winch Description

This Prowinch **1,500 lbs 12V Electric Offroad Winch** delivers plenty of power to assist in recovery, traversing rough terrain or loading a boat. This electric winch is a reliable and safe addition to most off-roading adventures.

Prowinch Electric DC Winches

All of our electric DC winches are created with the goal of offering the best price-performance ratio. Key components such as lifespan factors are constantly tested and improved in order to offer the best product for the price.

Key Components

All internal components have been upgraded to meet the highest quality standards. Key electronic components are produced by American or German brands, and we use American-made lubricants to ensure the lifespan of gears and reducers. Final assembly and all tests are performed locally at Prowinch facility before shipping to ensure that every unit meets the corresponding standard.

Control System

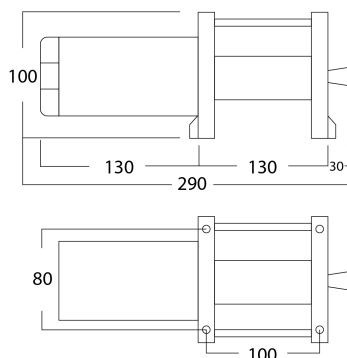
This winch includes a 12V wired remote control. The winch contains the best electric components available on the market, and everything is made, assembled, and tested locally in the US, Chile, or Colombia.

Braking System

Prowinch electric DC winches include a sliding ring gear clutch and an in drum automatic brake. Automatic brake system designed to automatically engage immediately upon any loss of power.

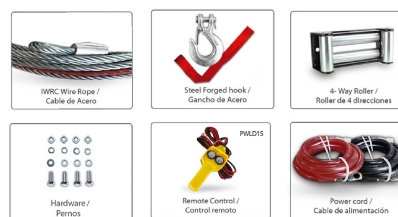
Technical Specifications

1st Layer Rated Capacity	1500 lb	Motor AMP	132 AMP
Speed /min	4.9~10.4 ft / 1.5~3.2 m	IEC Motor Protection	IP67
Number of Speeds	1 Speed	Control	Wired Remote Control
Wire rope capacity per layer first/last	1,500 / 900	Transmission / Reducer Type	1-Stage Planetary
Voltage	Battery Power 12 VDC	Gear Ratio	153:1
FCC ID	2ASYP-DW12K	Drum Brake	In-Drum Automatic Brake
Duty Class	Recovery / Rescate	Free Spooling Clutch Type	YES
Motor/Engine Type	DC Permanent Magnet Motor	Wire Rope	Steel ø3/16 in x 25 ft ø4mm x 7.6m
Motor/Engine Power	1.2 HP	Warranty	1 Year

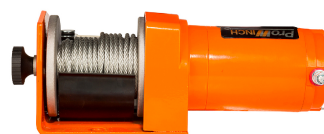
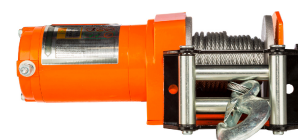


Dimensions in mm / Dimensiones en mm

INCLUDED/ INCLUIDO



OPTIONAL / OPCIONAL



Unit Weight & Dimensions

A Total Height	106 mm	Package 1 Net Weight	11 lbs / 5 Kg
BD Barrel Diameter	80 mm	Package 1 Width	9 in / 22.86 cm
D Depth	100 mm	Package 1 Gross Weight	15 lbs / 7 Kg
DL Drum Length	100 mm	Package 1 Height	6 in / 15.24 cm
W Width	290 mm	Package 1 Length	12 in / 30.48 cm
J Hook Opening	15.5 mm		
Total Unit Weight	11 lbs / 5 Kg		

Packaging Weight & Dimensions