



6000 lbs Powered Electric Winch Wireless Waterproof 12V DC

Key features

- Powerful 6,000lb rated line pull powered by a 5.5 horsepower 12V DC motor.
- Low-amp, permanent magnet motor; Gear Ratio- 210:1.
- Pull and turn free spooling clutch; Gearing 3 Stage Planetary.
- Equipped with a dynamic brake to prevent the galvanized steel rope from sliding.
- 1 Year Warranty, Customer Support and Service in the USA

Winch Description

This **6,000 lbs Electric Offroad Winch 12V** will get you out of any tough situation. Whether you are in the dirt, mud, or snow this dependable winch is the vital partner every rider needs. With a 6,000lb load capacity and 5.5HP motor, this electric winch will give you the results you need.

Prowinch Electric DC Winches

All of our electric DC winches are created with the goal of offering the best price-performance ratio. Key components such as lifespan factors are constantly tested and improved in order to offer the best product for the price.

Key Components

All internal components have been upgraded to meet the highest quality standards. Key electronic components are produced by American or German brands, and we use American-made lubricants to ensure the lifespan of gears and reducers. Final assembly and all tests are performed locally at Prowinch facility before shipping to ensure that every unit meets the corresponding standard.

Control System

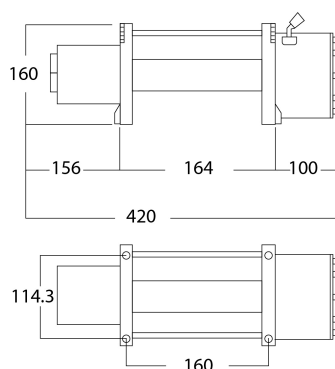
This winch includes a 12V wired remote control. The winch contains the best electric components available on the market, and everything is made, assembled, and tested locally in the US, Chile, or Colombia.

Braking System

Prowinch electric DC winches include a sliding ring gear clutch and an in drum automatic brake. Automatic brake system designed to automatically engage immediately upon any loss of power.

Technical Specifications

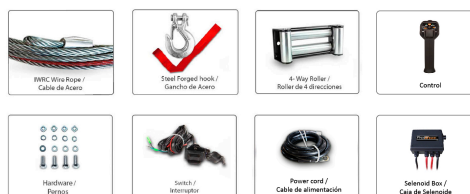
1st Layer Rated Capacity	6000 lbs	Motor AMP	280 AMP
Speed /min	4~24 ft / 1.2~7.3 m	IEC Motor Protection	IP67
Number of Speeds	1 Speed	Control	Wired Remote Control
Wire rope capacity per layer first/last	6,000 / 3,360	Transmission / Reducer Type	3-Stage Planetary
Voltage	Battery Power 12 VDC	Gear Ratio	210:1
FCC ID	2ASYP-DW12K	Drum Brake	In-Drum Automatic Brake
Duty Class	Recovery / Rescate	Free Spooling Clutch Type	Sliding Ring Gear
Motor/Engine Type	DC Permanent Magnet Motor	Wire Rope	Steel ø21/64 in x 45 ft ø8.3 mm x 14 m
Motor/Engine Power	5.5 HP	Warranty	1 Year



Dimensions in mm / Dimensiones en mm



INCLUDED/ INCLUIDO



OPTIONAL / OPCIONAL



Unit Weight & Dimensions

A Total Height	188 mm	Package 1 Net Weight	65 lbs / 29 Kg
DL Drum Length	124 mm	Package 1 Width	35 in / 88.9 cm
W Width	420 mm	Package 1 Gross Weight	65 lbs / 29 Kg
J Hook Opening	23.88 mm	Package 1 Height	11 in / 27.94 cm
BD Barrel Diameter	64 mm	Package 1 Length	20 in / 50.8 cm
Total Unit Weight	65 lbs / 30 Kg		

Packaging Weight & Dimensions