



3 Ton Top Running Motorized End Trucks Single Girder up to 57ft Span 220/440V 3P

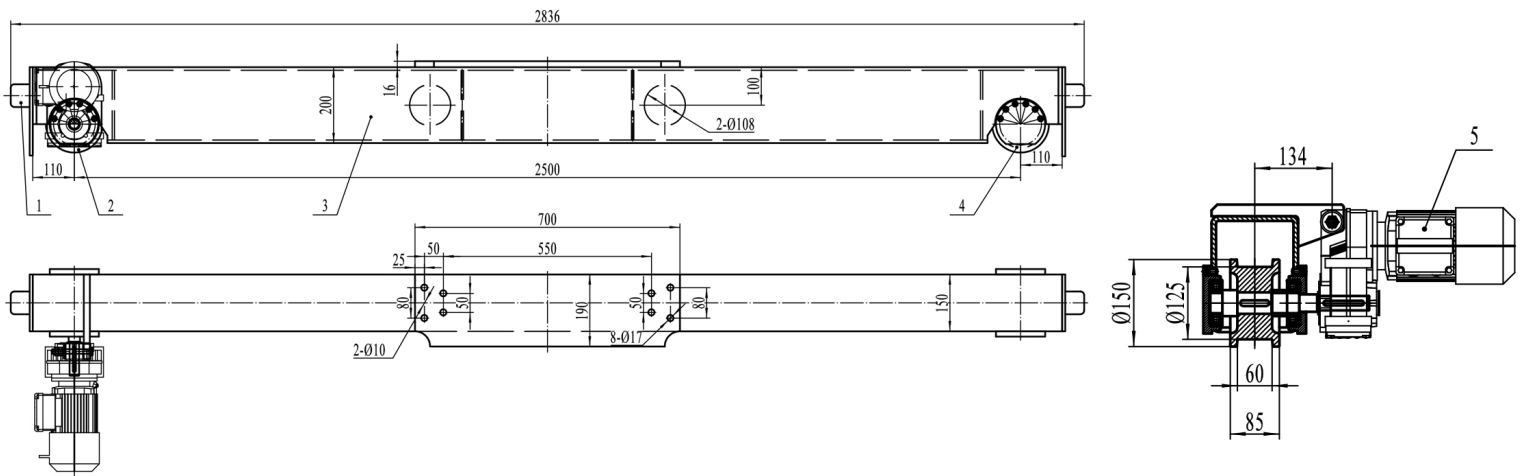
Key features

- For heavy-duty class "C" single girder crane applications
- Drives and brakes are compatible with Variable Frequency Drive (VFD)
- Suitable for use on ASCE crane rail or square bar
- Fully Painted Orange RAL2009
- 3 Year Warranty, Customer Support and Service in the USA

For heavy-duty class "C" single girder crane applications, Top running motorized end trucks. Include 2 trucks; 2 gear motors with D.C. brakes, rubber bumpers. All trucks are fully painted. Runway Rail ASCE # 30

Technical Specifications

Rated Load Capacity	3 Ton	Motor Brake	Yes
Speed /min	66 ft	IEC Motor Protection	IP54
Number of Speeds	1 Speed - Optional Variable Speed	Variable Frequency Driver	Optional 1.1 Kw
Voltage	3 Phase 220~240/440~480V 60Hz	Dynamic Brake	Only with VFD Optional
Total Power Watts	0.25 x 2	Control	Not Included. Optional single Speed, 2 Speed and Variable Speed
Max. Span	53 Ft	I-Beam Width Range	Any
Material	Steel	Standards Compliance	ASME / CMAA / Nch
Duty Class	H4/M5/2m/Class D	Warranty	3 Year



Unit Weight & Dimensions

End-Truck Length	2500 mm
-------------------------	---------