

## 5 Ton Top Running Motorized End Trucks Single Girder up to 34ft Span 220/440V 3P

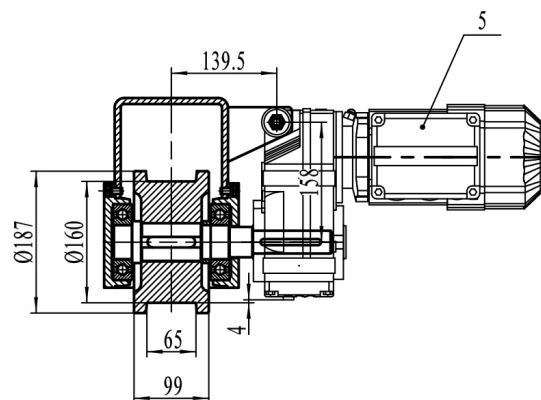
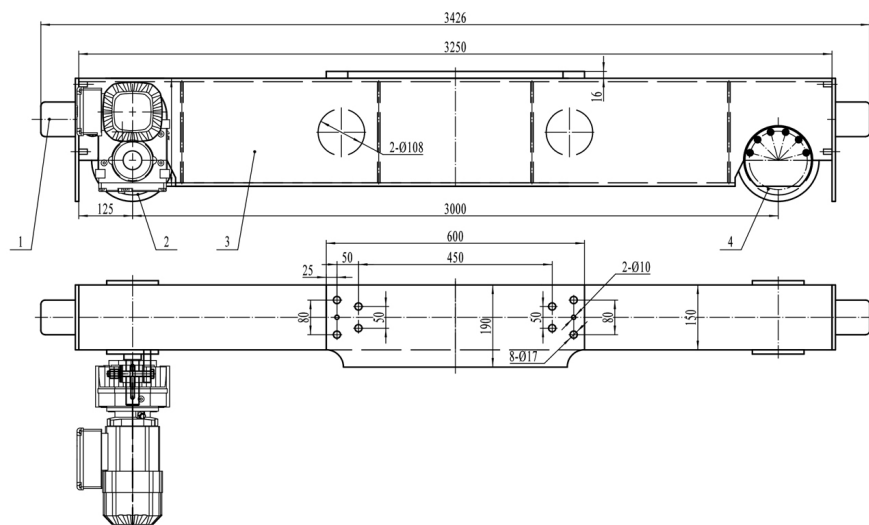
### Key features

- For heavy-duty class “C” single girder crane applications
- Drives and brakes are compatible with Variable Frequency Drive (VFD)
- Suitable for use on ASCE crane rail or square bar
- Fully Painted Orange RAL2009
- 3 Year Warranty, Customer Support and Service in the USA

For heavy-duty class “C” single girder crane applications, Top running motorized end trucks. Include 2 trucks; 2 gear motors with D.C. brakes, rubber bumpers. All trucks are fully painted. Runway Rail ASCE # 40

## Technical Specifications

<b>Rated Load Capacity</b>	5 Ton	<b>Motor Brake</b>	Yes
<b>Speed /min</b>	66 ft	<b>IEC Motor Protection</b>	IP54
<b>Number of Speeds</b>	1 Speed - Optional Variable Speed	<b>Variable Frequency Driver</b>	Optional 1.1 Kw
<b>Voltage</b>	3 Phase 220~240/440~480V 60Hz	<b>Dynamic Brake</b>	Only with VFD Optional
<b>Total Power Watts</b>	0.37 x 2	<b>Control</b>	Not Included. Optional single Speed, 2 Speed and Variable Speed
<b>Max. Span</b>	30 Ft	<b>I-Beam Width Range</b>	Any
<b>Material</b>	Steel	<b>Standards Compliance</b>	ASME / CMAA / Nch
<b>Duty Class</b>	H4/M5/2m/Class D	<b>Warranty</b>	3 Year



## Unit Weight & Dimensions

<b>End-Truck Length</b>	1500 mm
-------------------------	---------